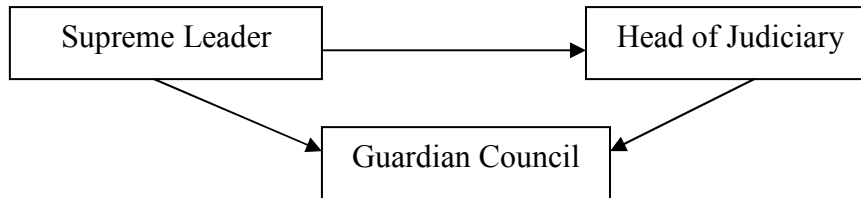


The Political Structure of The Iranian Government

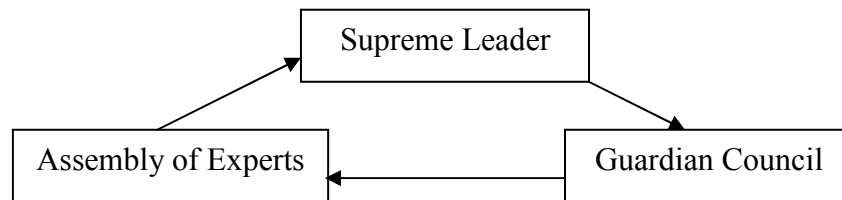
The Supreme Leader (Khamenei) is the most powerful figure in the political scene in Iran. He appoints 6 clerical members of the Guardian Council directly, and 6 jurists indirectly through the Head of Judiciary. Therefore:



In this way, he has full control over the Guardian Council.

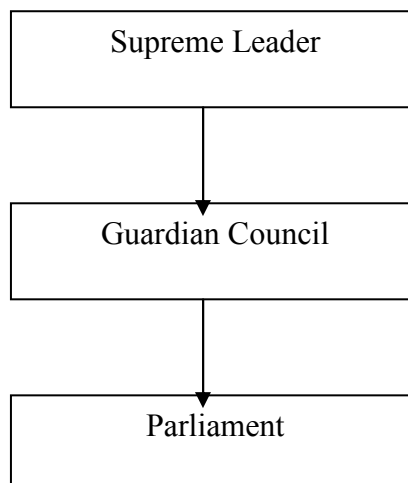
The Guardian Council has two major tasks:

1. Supervising all kinds of elections in every level in the country including approving/disapproving candidates, the election itself or part of it, and those elected. It can easily filter out the unwanted. There are three main nationwide elections in Iran:
The election of Assembly of Experts, who in turn “selects and supervises” the Supreme Leader.

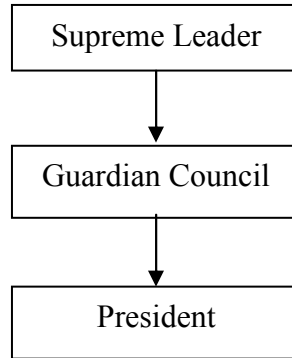


Obviously it is the Supreme Leader who pulls the strings, and not the Assembly of Experts

The election of the National Parliament (Islamic Consultative Assembly). All the members of the parliament are subject to verification by the Guardian Council both before and after the election so that no unwanted figure should be allowed into the Assembly. In this way the Supreme Leader has a powerful hand over the Assembly.



The Presidential election. Only those candidates who have been approved by the Guardian Council can be elected by the masses as the President. All the ballots are subject to Guardian Council's verification. All this task is carried out behind closed doors. Guardian Council can discredit the election results of any/all district(s) without providing any reason to anyone or any organization, except the Supreme Leader.



2. Ratification of what is passed by the parliament. It means that neither the parliament nor the government can enforce a law or regulation prior to winning the consent of the Guardian Council (and therefore the Supreme Leader). If there is a conflict between the parliament and the Guardian Council, the issue is brought to the Expediency Discernment Council with about 30 members, all of whom are appointed directly by the Leader.